

Safe Handling and Packaging of Tray Product to be Returned

CARE IN IDENTIFICATION AND HANDLING OF FAILURES

If a device is suspected of failing, it is to the benefit of the Customer and Wolfson that the problem is investigated as soon as possible. It is important the device is still handled with the same level of care as a good device. Damage incurred during and after removing the device from the application will make it impossible to identify the original failure mechanism.

If a failing device is requested to be returned for failure analysis:

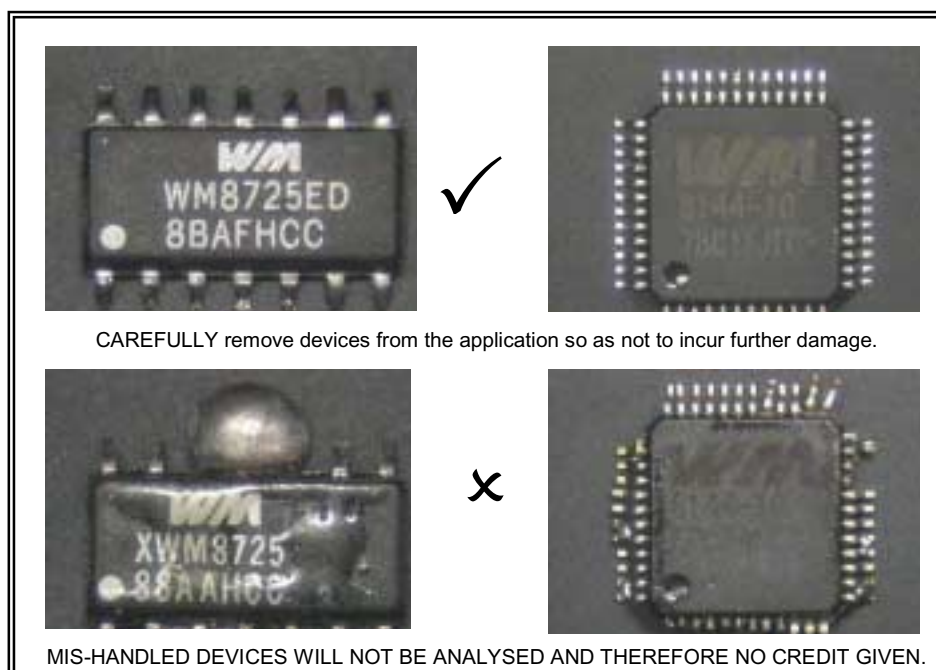
- It must reach Wolfson in a condition comparable to when suspected of failing by the customer.
- If it is necessary for the device to be removed from the application, this must be done carefully.
- Once isolated the device must at all times be stored in an ESD protective tube or tray and wrapped in ESD safe materials.
- This must be done in a static safe area and not opened again until received by Wolfson. A static safe area would consist of wrist straps, ESD protective bench mats, heel straps etc.

Refer to the following Application Note, ESD Damage in Integrated Circuits: Causes and Prevention WAN_109, available from <http://www.wolfsonmicro.com>.

WOLFSON CANNOT ACCEPT THE RETURN OF PRODUCTS THAT HAVE BEEN INADEQUATELY STORED, HANDLED OR RE-PACKED.

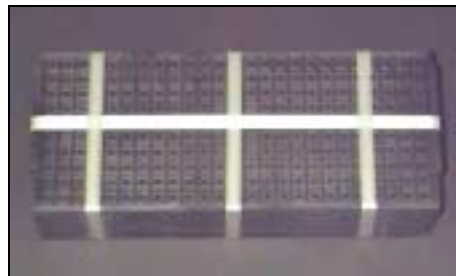
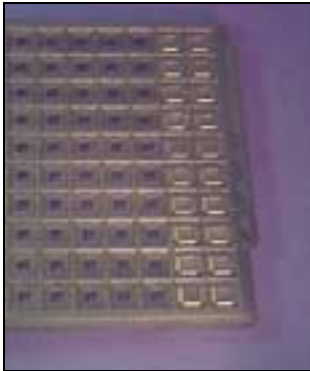
LEVEL OF ACCEPTABILITY

The following pictures clearly indicate what is acceptable / not acceptable in the return of parts to Wolfson. Please refer to Wolfson's RMA Guidelines before requesting the return of parts and complete the Wolfson RMA request form, both available from local Sales office.

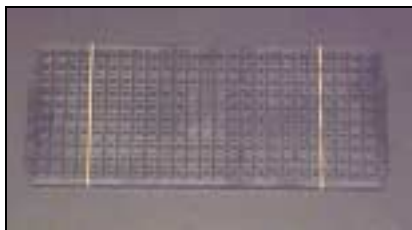


WAN_0164

Devices should be stored in the correct anti-static carrier for trays as shown below. Make sure that the trays have been tightly fixed with non-elastic straps or banded using a banding machine. **DO NOT USE RUBBER BANDS** as these will stretch and the parts will become dislodged and damaged.



If trays are not securely fixed, shocks during transit may cause the trays to briefly separate and the devices could become jammed in between them. **AT NO TIME SHOULD NORMAL ADHESIVE TAPE BE USED.** The act of pulling the tape from the reel generates static electricity, which can cause ESD damage.



Pack the trays securely in the appropriate container e.g. a cardboard box as shown below. All shipment material used inside the container such as bubble wrap should be non-static generating.



Please use original packaging where possible

WAN_0164

For small quantities it may be possible to use a padded envelope (example below). Ensure there is adequate packing material to prevent the devices from moving. All shipment material used inside the padded envelope such as bubble wrap should be non-static generating.



DO NOT pack devices loosely in polythene bags. They are not ESD protective and the leads will become tangled and damaged. Any devices returned in insufficient packaging e.g. envelopes that offer no resistance to ESD or physical damage will be rejected.



APPLICATION SUPPORT

If you require more information or require technical support please contact Wolfson Microelectronics Applications group through the following channels:

Email: apps@wolfsonmicro.com
Telephone Apps: +44 (0)131 272 7070
Fax: +44 (0)131 272 7001
Mail: Applications at the address on last page.

or contact your local Wolfson representative.

Additional information may be made available from time to time on our web site at <http://www.wolfsonmicro.com>

IMPORTANT NOTICE

Wolfson Microelectronics plc (WM) reserve the right to make changes to their products or to discontinue any product or service without notice, and advise customers to obtain the latest version of relevant information to verify, before placing orders, that information being relied on is current. All products are sold subject to the WM terms and conditions of sale supplied at the time of order acknowledgement, including those pertaining to warranty, patent infringement, and limitation of liability.

WM warrants performance of its products to the specifications applicable at the time of sale in accordance with WM's standard warranty. Testing and other quality control techniques are utilised to the extent WM deems necessary to support this warranty. Specific testing of all parameters of each device is not necessarily performed, except those mandated by government requirements.

In order to minimise risks associated with customer applications, adequate design and operating safeguards must be used by the customer to minimise inherent or procedural hazards. Wolfson products are not authorised for use as critical components in life support devices or systems without the express written approval of an officer of the company. Life support devices or systems are devices or systems that are intended for surgical implant into the body, or support or sustain life, and whose failure to perform when properly used in accordance with instructions for use provided, can be reasonably expected to result in a significant injury to the user. A critical component is any component of a life support device or system whose failure to perform can be reasonably expected to cause the failure of the life support device or system, or to affect its safety or effectiveness.

WM assumes no liability for applications assistance or customer product design. WM does not warrant or represent that any license, either express or implied, is granted under any patent right, copyright, mask work right, or other intellectual property right of WM covering or relating to any combination, machine, or process in which such products or services might be or are used. WM's publication of information regarding any third party's products or services does not constitute WM's approval, license, warranty or endorsement thereof.

Reproduction of information from the WM web site or datasheets is permissible only if reproduction is without alteration and is accompanied by all associated warranties, conditions, limitations and notices. Representation or reproduction of this information with alteration voids all warranties provided for an associated WM product or service, is an unfair and deceptive business practice, and WM is not responsible nor liable for any such use.

Resale of WM's products or services with statements different from or beyond the parameters stated by WM for that product or service voids all express and any implied warranties for the associated WM product or service, is an unfair and deceptive business practice, and WM is not responsible nor liable for any such use.

ADDRESS:

Wolfson Microelectronics plc
Westfield House
26 Westfield Road
Edinburgh
EH11 2QB
United Kingdom

Tel :: +44 (0)131 272 7000

Fax :: +44 (0)131 272 7001

Email :: sales@wolfsonmicro.com